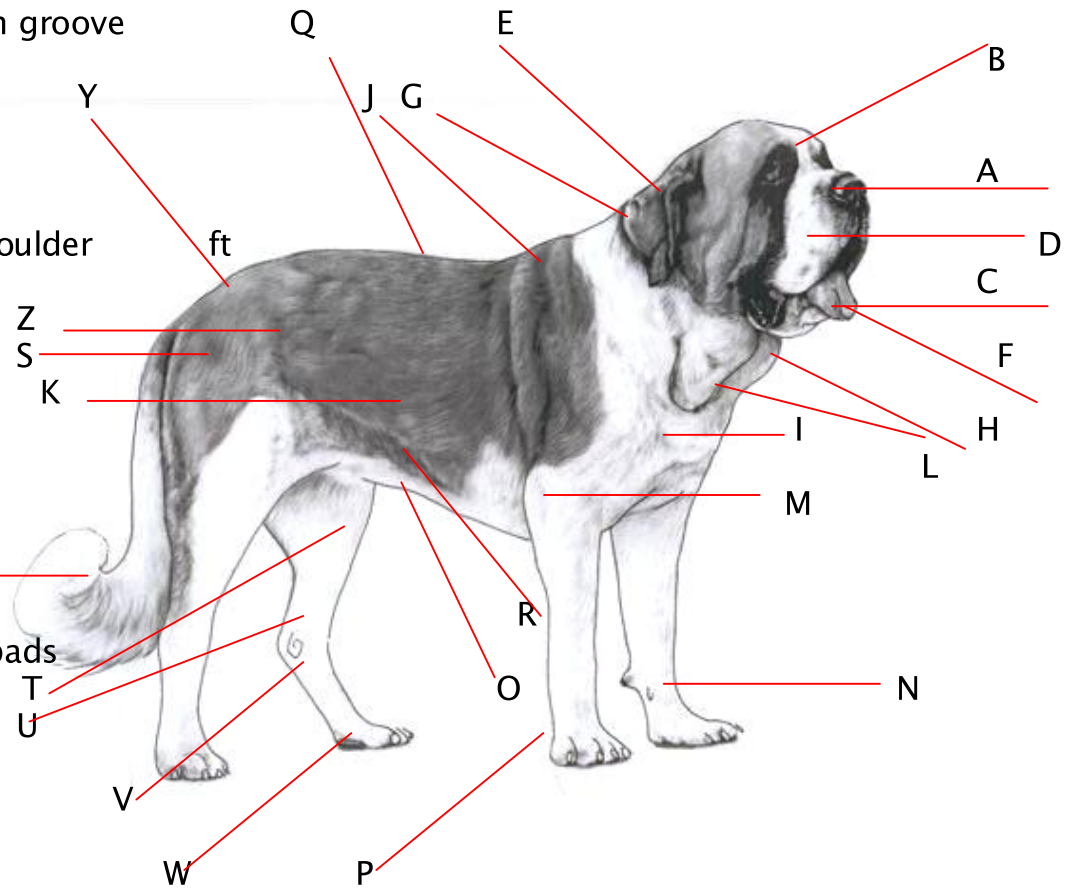




Parts of the Dog's Body – Contours and Bony Landmarks

- A Nostrils
- B Eyes
- C Chin
- D Muzzle
- E Ears
- F Tongue median groove
- G Crest of neck
- H Throat latch
- I Sternum
- J Withers
- K Ribs
- L Point of the Shoulder
- M Elbow
- N Dew claw
- O Umbilicus
- P Pads of paws
- Q Spine
- R Belly
- S Hip joint
- T Stifle
- U Hock
- V Pastern
- W Rear stopper pads
- X Tail
- Y Croup
- Z Flank



petmassageisfunpetmassagemakesydogfeelgreatmorebalancedinbodymindandspirit petmassageisfunpetmassagemakesydogfeelgreatmorebalancedinbodymindandspirit

This will complete the anatomy portion of your scout badge skills requirement.
 Test your memory: Place the letter after the appropriate term

- | | | | |
|--------------|-----------------------|-----------------------|---------|
| Dew claw | Pads of paws | Hock | Belly |
| Belly | Spine | Point of the Shoulder | Stifle |
| Tail | Elbow | Hip joint | Muzzle |
| Throat latch | Ears | Croup | Sternum |
| Eyes | Tongue midline groove | Dew claw | Chin |
| Pastern | Tail | | |
| Flank | | Nostrils | |
| | Crest of neck | Spine | |